

► Our technology. Your success.

Pumps • Valves • Service



## **KSB Fire Fighting Pumps** – The Most Reliable Protection against fire hazard



## KSB is **with you**

KSB has been active for more than 140 years in producing pumps and valves. KSB's experience which has wide pump program in understood from own proficiency patents.

We have supported for many projects in Indonesia. On different segments, on different application, in changing condition an all year round, KSB keeps it customers satisfied



PT. PLN (PERSERO)



PT WIJAYA KARYA (Persero) Tbk.



Rekind



Affiliate of Freeport-McMoRan Copper & Gold



CONSTRUCTION & INVESTMENT

Leading the market supported with our wide range of coverage areas, KSB is the leader of European specialy Indonesia fire market. KSB produces most of pumps in different countries of the world and KSB's experience in the issue of fire dates back 40 years.

#### **KSB Indonesia**

In Indonesia, KSB fire fighting pumps are designed to meet the standard NFPA 20. NFPA is the main code that governs fire pump installations in North America or also known as the National Fire Protection Association's NFPA 20 Standard for the

Installation of Stationary Fire Pumps for Fire Protection.

KSB Indonesia as part of KSB worldwide group offers world-class quality of the fire fighting pumps that caters to the safety standard requirements of your building ensuring safety against fire hazards.

As an added value, KSB Indonesia has also received an ISO 9001 certification since 1998 for the quality system applied to its service related activities that include assembly and repairing for pumps and valves along with its other business features.



## Pump Testing Facility

KSB Indonesia fully test every fire pump complete with driver, controllers, and accessories to guarantee total integrity and ensure the fire pump package arrives on the site ready for trouble free operation.

The testing facility commissioned by KSB AG Germany and Inspection done by PT. Sucofindo. It is designed to meet the international standard for pump performance test according to ISO 9906:2011, Hydraulic Institute and API 610:2010.

### Our pump testing facility specification

- Capacity : up to 5.000 USGPM
- Power : max 315 kW (electrical motor)
- Design pump type :
  - a. Horizontal
  - b. Vertical
  - c. Submersible / Deep well pumps
- Accessories :
  1. Flow meter
  2. Automatic pressure transmitter
  3. Pressure gauge
  4. Portable flow meter



# Certifications

Simplify your protection system. KSB Indonesia proven field experience provides you with a truly intergrated custom built package that is as individual as your sytem demands.

## KSB Indonesia Packaged Fire Service pumps offer you

- Pump, driver and fully automatic controller mounted on common base
- Optional suction and discharge manifolds
- Complete equipment compatibility
- Economical installation
- Better space utilization within Pump-House
- Single source supply service and warranty
- Accurate predetermined cost
- Equipment delivered to site in consolidated shipment
- Simplified field installation and handling
- No need for interconnecting wiring
- No need for separate mounting of control pane;
- Factory wiring and testing
- Factory piped fuel system

KSB Indonesia experienced provide fire fighting pumps for many industries area.

We obtained FM Approvals on centrifugal fire pumps, which is prepared for KSB Australia Pty. Ltd and already been

approved to be packaged and tested at KSB Indonesia. This package production has certified FM Approved. It represent our performance and capability



## Reliable by design: KSB products for fire fighting applications

### BEV B Pump Vertical Turbine Pump



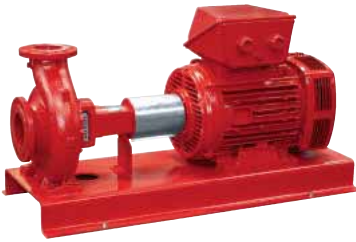
#### Technical data:

Flow Rate  
Up to 11.400  
USGPM

Head  
Up to 200 m

Temperature  
Up to 105 °C

### Etanorm / MCPK End Suction Pump



#### Technical data:

Flow Rate  
Up to 3.250 USG-  
PM

Head  
Up to 160 m

Temperature  
Up to 140 °C

### Omega / RDL Axial split pump



#### Technical data:

Flow Rate  
Up to 44.000  
USGPM

Head  
Up to 240 m

Temperature  
Up to 80 °C

### Movitec Vertical Inline Pump

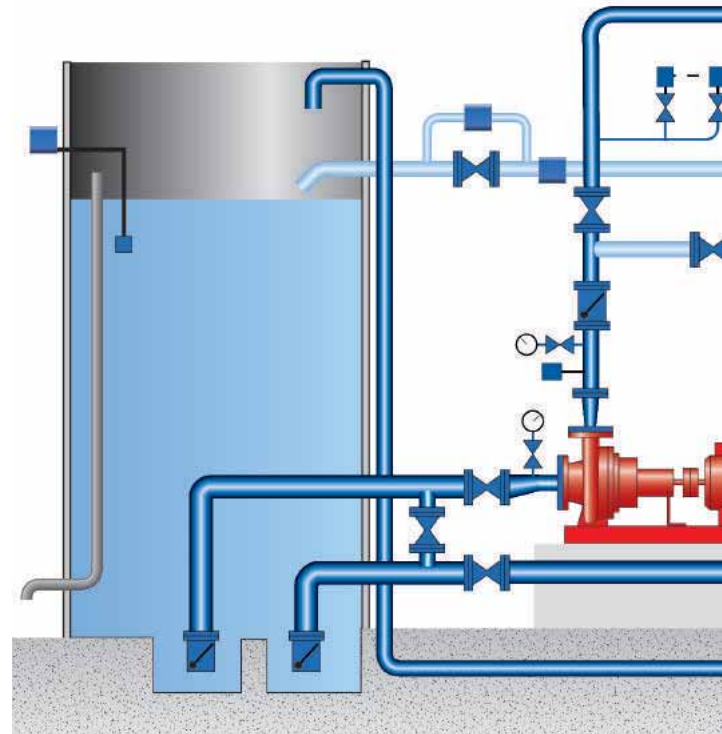
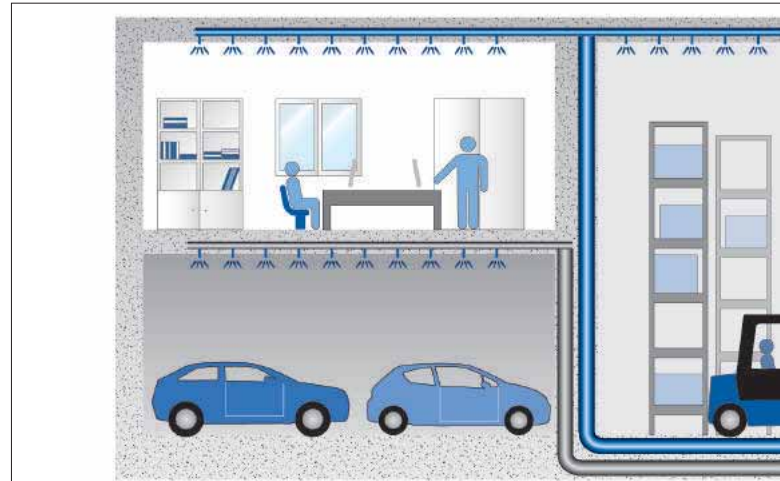


#### Technical data:

Flow Rate  
Up to 490 USGPM

Head  
Up to 249 m

Temperature  
Up to 120 °C



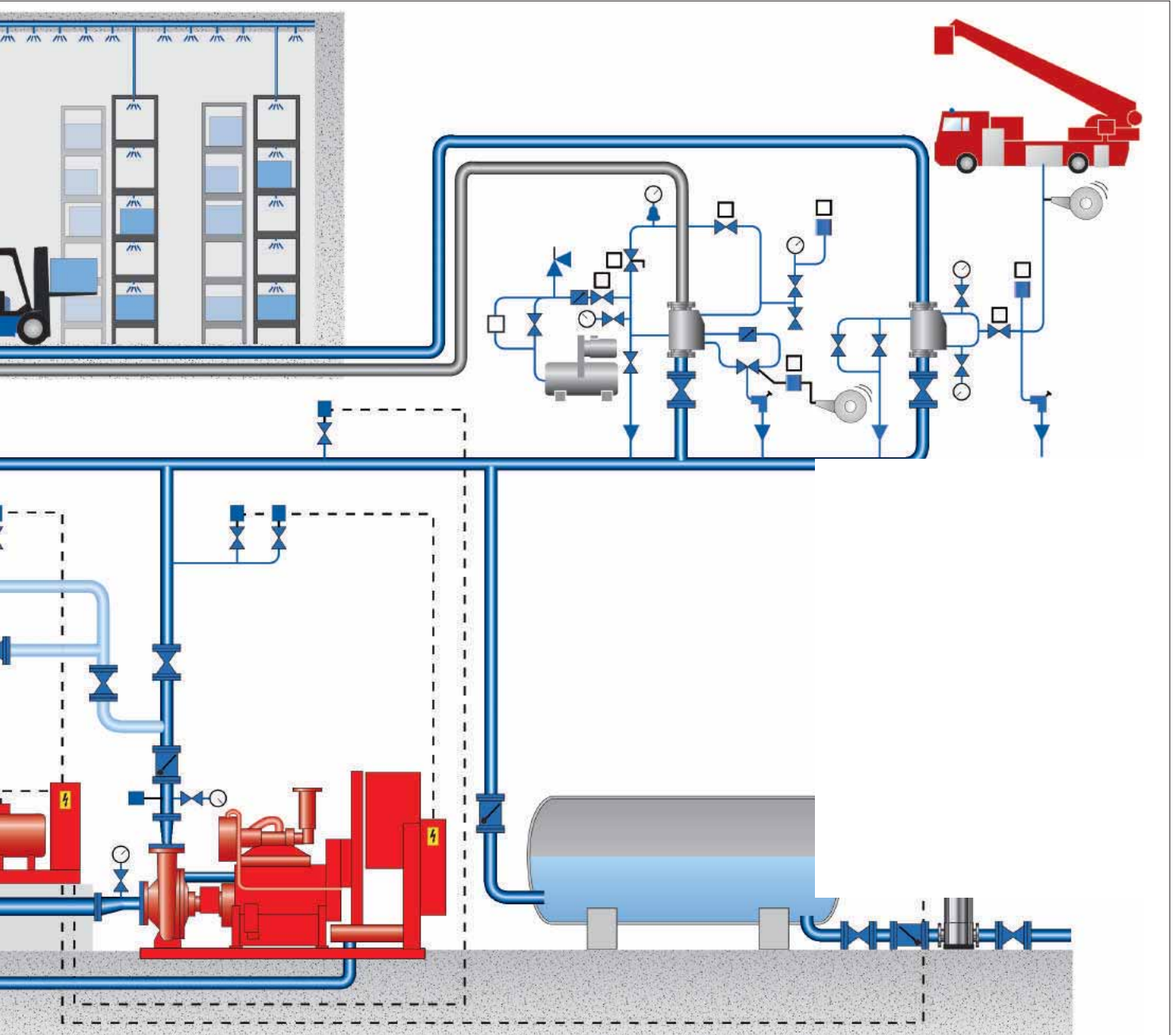
### Multitec Horizontal Multistage pump



#### Technical data:

Flow Rate  
Up to 6600 USGPM  
Head  
Up to 1000 m  
Temperature  
Up to 200 °C

# ions



**Electric Fire Pump**



**Combine Package  
Fire Pump /  
Diesel Fire Pump**





Technology that **makes its mark**

The KSB newsletter –  
don't miss out, sign up now:  
[www.ksb.com/newsletter](http://www.ksb.com/newsletter)



Your local KSB representative:



**PT. Sukma Tirta Persada**

Ruko Asia Tropis (Ruko Grand Boulevard)

Jl. Taman Cemara Blok AT 15 No. 48

Harapan Indah, Bekasi 17214

Tel : (+62-21) 8896 9294 , 8896 9295

Fax: (+62-21) 8865 332

[info@sukmatirta.com](mailto:info@sukmatirta.com)

[www.sukmatirta.com](http://www.sukmatirta.com)



**KSB Aktiengesellschaft**  
Johann-Klein-Straße 9  
67227 Frankenthal (Germany)  
[www.ksb.com](http://www.ksb.com)

You can also visit us at  
[www.ksb.com/socialmedia](http://www.ksb.com/socialmedia)